

## Features in this Edition:

- Environment Issues
- Days out with Glaramara
- Meet our staff.

## Index:

- Page 2 – Day/Weekend Ideas
- Page 3 - Weddings/Centre News
- Page 4 – Merchandise/Challenge Days
- Page 5 – Glaramara – its people
- Page 6 – Our Website/Videos
- + Future Events

## Environmental issues

The Centre continues to strive to make a difference to the Borrowdale Valley and beyond. We have set tough targets this year in our recycling which is now carefully monitored through our provider, Eden Recycling. This

followed recognition gained from Cumbria Business Environment Network (CBEN). Unfortunately, most of the trees which we planted in November last year did not survive flooding and the cold winter. However, some of them are thriving including oak, rowan, cherry, alder and ash. **The Gold Award is next.**



## 1950's Glaramara – a short insight

Following publicity of **75 years of Glaramara** we were pleased to be contacted by people who wanted to share their experience of their time here. One lady from Stockport **spoke of her 'gap year' in 1951** spent working for the CHA involving

plenty of hard work interspersed with lots of walking. There was no electricity past Grange and water was heated in a huge cook stove. Guests were **'expected' to be involved in Activities and were given an 'A or B' alternative.** Walks were led by the **'Secretary' while the**

## Host & Hostess

organised the social events including Scottish, Cumbrian and Country Dancing. Fresh food was delivered by the local bus whilst there was huge excitement if a guest turned up in a **motor car....**





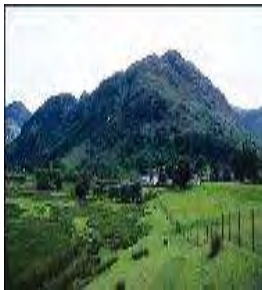
## Improve your Mountain Biking

**Cumbria is one of the leading mountain biking destinations in Britain.** The area around Keswick, including Whinlatter and Borrowdale, offers miles of scenic off-road all weather trails, from steep mountain challenges to less arduous introductory rides.

A weekend with Glaramara is not just a “follow the leader” style event. We want you to pick up new skills and tips, develop and hone existing techniques and do so during amazing ride outs in fantastic surroundings. We are here to offer you great riding to whatever standard

you are at, so don't panic... you will never be out of your depth on one of our rides

***Please contact us if you would like more information including pricing***



## A walk up Glaramara – a Wainwright favourite

For anyone who has never climbed a Lakeland summit, **Glaramara** is perhaps the best fell to begin with. The ascent is not excessively strenuous, is easily navigable, yet is still gives the walker a great appreciation of the Cumbrian fells. From Mountain View, close to the Centre, a short

track takes you to a stile which, in turn leads to a pathway. This broadly follows the crest of the hill in front leading ultimately to the summit. Near the top there is a hundred foot or so scramble which can be avoided if need be by taking a wider berth to the right. Once on the summit there are various options for your

descent including south westwards via Allen Crag, Grains Gill, Stockley Bridge and the Seathwaite **Valley (England's wettest place!)**. At 2569 feet, the views from the summit can be stupendous. For those of you looking for competition, try the annual **Glaramara Fell Race** in May.



## A Wedding Reception venue with a difference

A young couple used Glaramara for their Wedding Reception location in August. The weather was not particularly kind but everybody appeared to have a great time. Using the field immediately in front of Glaramara a **giant Teepee**

style tent was erected to house the celebrations. Its size and shape certainly provided interest to those passing Glaramara. Provided by hire company, Papakata, it provided a unique yet cosy space - <http://www.papakata.co.uk/>.

Thanks to the bride and groom for using Glaramara as a venue.



## Julia Bradbury (x8)! .....

Not just one Julia Bradbury, but 8 paid a visit to Glaramara last Sunday! The walking group from the Blackburn area enjoyed refreshments at the Centre in the company of a representative of Keswick Tourism Association, before embarking upon a local Wainwright walk.

The JB lookalikes climbed the eponymous, Glaramara, where

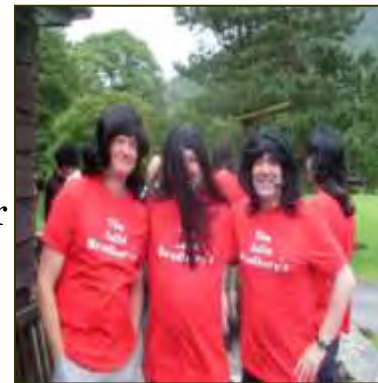
they managed to obtain a mobile phone signal to talk to their hero and Honorary President, on holiday in Majorca. As organiser, Simon Davies explained **'The Julia Bradbury's stared at my mobile in disbelief when they heard her chatting away and the industrial language used by some of the team was hopefully faded out by the wind and the rain— Julia never commented on it,**

but I guess she must have heard something! A true professional – **even on her holiday!'**

**Linda Furness of KTA** only wished she could have joined the **JB's on their walk** having had such a good time at the Centre during the photo shoot. In thanking everybody concerned, she made special mention of **Gina Fox (Julia's sister & agent)** as well as Julia herself for their support.



## Spot the difference



## Our 'little shop' /Glaramara gifts/Equipment Hire



We are slowly, but surely, increasing our selection of items for sale and hire, mainly due to customer demand. As well as the everyday practical items you may need during your stay, we are also expanding our

range of branded items, which are ideal as small gifts. As some of you may know, these include mugs, notelets, teatowels, teashirts, polo shirts, key rings and fridge magnets. We also

continue to hire outdoor gear.

***Please contact us if you would like to purchase any of our souvenirs***



## Just relax at the Centre

**Don't forget that we** are happy for you to come and stay at the Centre and enjoy our facilities without embarking on outdoor activities. Our **Bar** has a wide selection of draft and bottled beers

and an enviable selection of wines. In our **Dining Room** - due to be extended this Autumn - you will be able to enjoy a great choice of food including a four course

evening meal. Use our **outside terrace** and lawned areas to absorb oneself in a book or plan the **next day's walking route** while sipping an early evening **drink.....**

## Challenge Days at the Centre



We are encouraging more and more of our groups to choose activities which are based at the Centre itself. Often in the **form of 'round robin'** team challenges, they are fun, cost effective and environmentally friendly due to the removal of transport to activity sites. As well as the problem solving sessions within the

grounds, the Centre is close to orienteering sites, ghylls for scrambling and lakeland becks for other water based activities. ***Please contact us for more information.***



## The life of an Outdoor Instructor

One of our longest serving Instructors is Tom Ambrose. Originally from Somerset he completed an HND in Outdoor Education at The University of Central Lancashire (now University of Cumbria) before pursuing a career as an Outdoor Pursuits Instructor. Having based himself in Keswick nine years ago, he worked as a Seasonal

Instructor for several years before joining Glaramara in 2005.

Tom has been climbing and trekking throughout Europe, New Zealand and, more recently, the Alps. He holds a Single Pitch Award, Summer Mountain Leader and is working towards his Caving Leader **Award**. Tom is a keen mountain biker having completed

his Trail Cycle Leader Award and is working towards his Mountain Bike Leader. He also recently found time to marry Mia. Well respected and popular with our customers, we hope he will be at Glaramara in another five years!



**Tom Ambrose**

## Canadian traveller who ended up staying and became our Manager

Back in 2002, Leanne Bullough (now Grave) appeared at Glaramara as a young Canadian backpacker needing some work to fund her travels. 8 years on Leanne became Centre Manager. Whilst still involved with the day to day

management of the Centre, Leanne is central to our wider reaching management and strategic decisions including marketing, health and safety and our environmental policies.

Now married with a little girl, Leanne **'lives in 'the big**

**city'** - Keswick - with her husband, Peter. Anybody who has come into contact with Leanne will know of her excellent customer services skills and efficiency in all aspects of the job. Whilst, jokingly, she will never be **'a local'**, Leanne remains a Canadian patriot and regular visits family back home.

*'Glaramara has been a great place to work for the past five years. My colleagues are great to be around and the Centre has developed year on year. I have responsibility for some of our long standing clients but it always great to meet new people, young and old – looking to experience something new' – Tom Ambrose*

*Below is our most recent member of staff – 'Mr Scarecrow'!!*



**Leanne Grave**



**Admontes Limited  
Glaramara Centre  
Seatoller  
Borrowdale  
Keswick  
CA12 5XQ**

**PHONE:  
017687 77222**

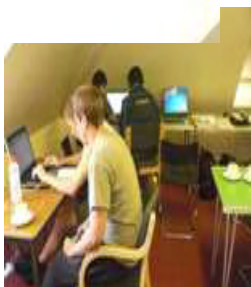
**FAX:  
017687 77198**

**E-MAIL:  
info@glaramara.co.uk**

---

**We're on the  
Web!**

**at:  
www.glaramara  
.co.uk**



## REDESIGNED WEBSITE/YOUTUBE CHANNEL

Check out our website which should now be easier to navigate with added features including easy to find buttons to our **Facebook**, **Twitter** and **Flickr** pages. We have also created a dedicated Youtube channel showcasing our videos and

slideshows as well as suggestions for other items connected with the Lake District. Go to <http://www.youtube.com/user/GlaramaraOutdoors?feature=mhum>

If you have anything to say about Glaramara or just generally want to engage with other like

minded people, please:



Or **tweet us**. Similarly, if you have any photograph which you feel our Flickr page would benefit from please upload.



Future Events in 2010/11 at Glaramara

### **Wine, Food and Guided Walk Weekend**

with a professional experienced wine educator. It is aimed at those with only a limited appreciation of wine and will also feature walking under the supervision of our Outdoor Instructors

### **Borrowdale's Industrial Heritage Revealed**

In partnership with Honister Slate Mine, this weekend involves visits to both the Plumbago wad mine at Seathwaite and the Slate Mine at Honister as well as presentations from local experts combined with winter guided walks. ***We have not set dates for either of these Events but if you are a group organiser and feel they may be of interest, please contact us for more details.***

**Activity Schedule** – we have released dates for **October**. Each activity session will be on a first come, first served basis so don't hang around! There will be a range of activities on offer including ghyll scrambles, Via Ferrata and cave exploration. Details on the website. **AVAILABLE TO EVERYONE**

Hire our facilities: **Hire our Training Suite** – set in a building separate from the Centre, the facility is wi-fi enabled and the first floor is suitable for teaching and training as well as providing a venue, with a difference, for meetings, presentations and discussion groups. **Contact us for more details.**

Please see our **Venue Hire page** on our website for examples of what the Glaramara Centre can do for you. From Wedding Receptions to Birthday Parties to Business Meetings we can meet your needs.

**Glaramara**